



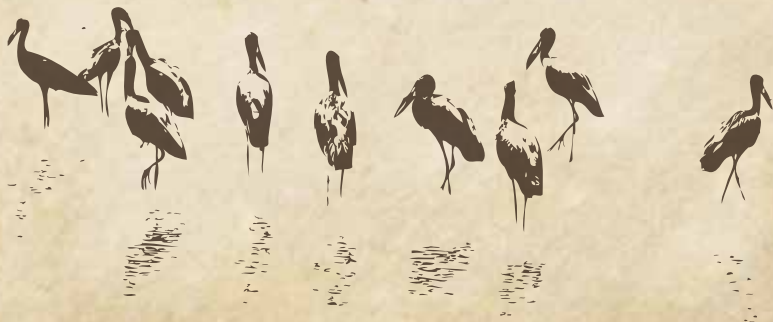
Dear **Guest**

We are delighted that you have selected our Lodge.

On behalf of the entire team at Nkasa Lupala Tented Lodge, I extend you a very warm welcome and trust your stay with us will be both enjoyable and comfortable.

Should you require any assistance or have any specific requirements, please do not hesitate to contact one of our management team.

With best regards,
Nkasa Lupala Tented Lodge



The management would like you to read carefully the following information and safety precautions

YOUR TENT

Make sure before leaving your room to switch off the lights and close the bathroom and front door. This is to prevent insects and mosquitoes to enter your tent.

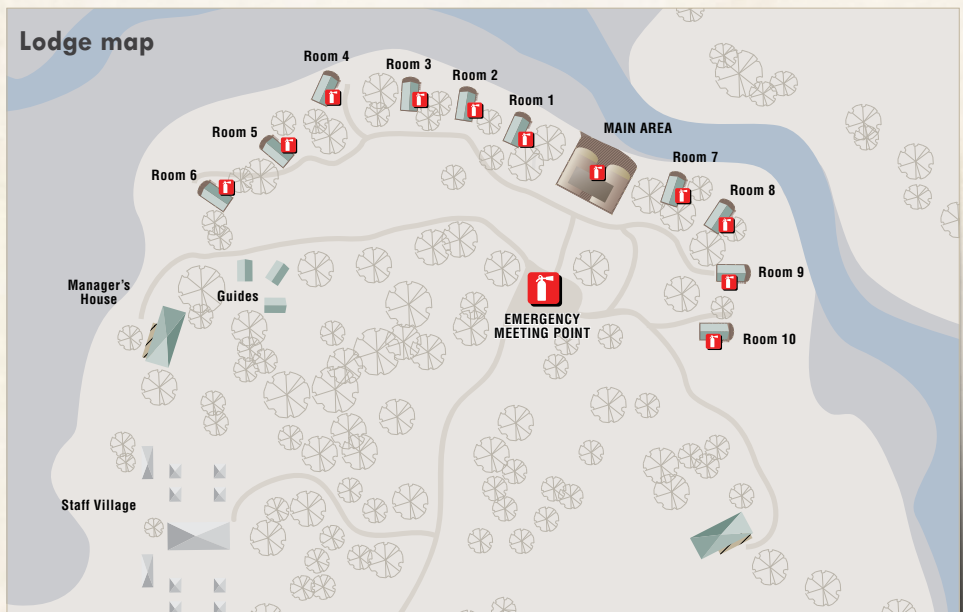
A normal iron uses at least 10-times as much energy as 10, 100-watt light bulbs together. This is why although your linen is clean is not ironed.

We are proud to inform you that all the electricity and hot water in your tent is produced from solar energy.

In your room you can find a 12V plug, the same of the car lighter. Feel free to charge your phone and request an adaptor from the management if you don't have one. NO hair dryer.

If it's a very cloudy day there is the risk that the water is not very warm. Please keep this in mind.

Please help us also to reduce water consumption and charge your electronic devices only if strictly necessary.



Thank you for helping us to reduce our carbon footprint.

MEALS

Included in your accommodation is our three-course dinner and breakfast. From 16.00 onwards tea, coffee and biscuits are available also on a complimentary basis in the lounge area. Lunch can be reserved. The bar is open from 7 h until 23 h.

WILD & DANGEROUS ANIMALS

There are no fences around Nkasa Lupala tented lodge and wild animals wander through at all hours of day and night. Guests, for their own safety, are requested to stay within the lodge grounds. After sunset, guides are on duty and are on hand to escort guests back to their rooms.

The guides remain on duty throughout the night. In case of danger please use the emergency horn and call for assistance. Don't leave the tent! Nkasa Lupala tented lodge owners and employees can not be held responsible for incidents of any kind and its consequences.

Please **DONT** feed wild animals!

CHILDREN

Although children are welcome at Nkasa Lupala, an adult must supervise them at all times. It is the responsibility of the parents to ensure the safety of their children. The Lodge and its staff cannot be held responsible. Respect the other guests!

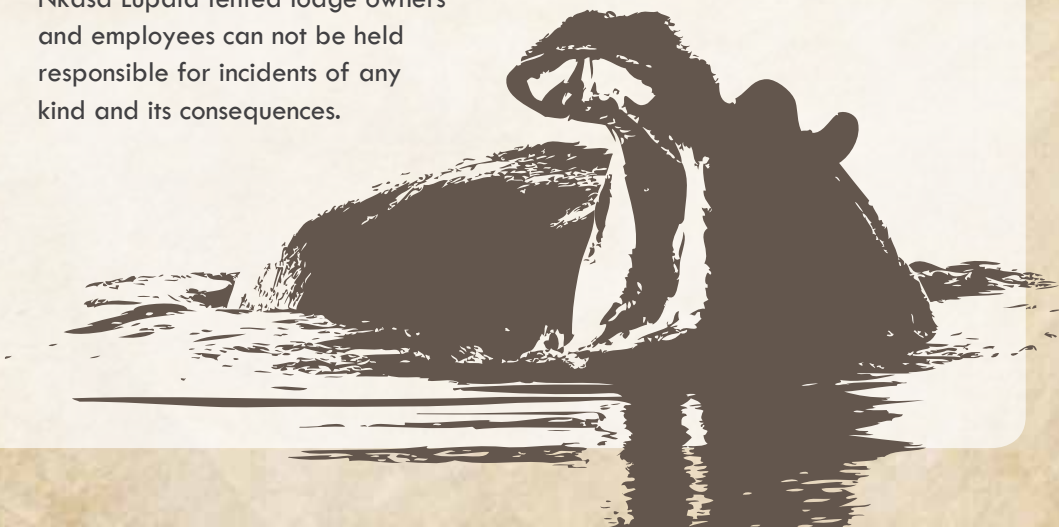
INTERNET

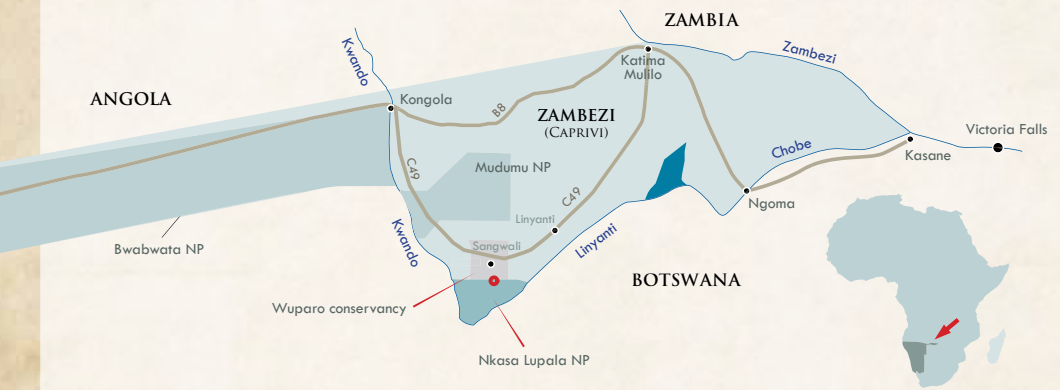
Free Wi-fi is available at the main lounge. It will be on only few hour during daytime (it's solar powered). Ask for the password at reception.

FIRE

In case of fire, under your tent you will find a fire extinguisher, use it then call for assistance. The lodge map shows the emergency meeting point.

Enjoy the wild!





The Lodge location

Nkasa Lupala tented lodge is situated 130km west of Katima Mulilo in the Zambezi Region (Caprivi) of North East Namibia.

The distance from Kongola is 75km on good gravel road. (Works for tarring the whole C49 started in April 2012)

Nkasa Lupala tented lodge is situated on the Lupala island less than 300m from the Nkasa Lupala NP (Mamili NP) border and the fact that there is no fence will allow large mammals and other animals to roam freely in the vicinity of the lodge.

This will enhance the sense of remote wilderness and adventure for the guests who will also experience the unique for Namibia and Zambezi region, Okavango Delta-like environment combining wetlands, woodlands and open plains.

Nkasa Lupala tented lodge is situated in the Wuparo Conservancy that is part of the successful Namibian



conservancy program supported by WWF and IRDNC.

The dominant ethnic group in the conservancy area are the Mayeyi and they are one of the Zambezi tribal groups, they speak Siyeyi as their mother tongue, the language contains a series of clicks indicating a relation with the Khoi-khoi.

David Livingstone called them river people and described the Mayeyi as the “Quakers of Africa”, because of their peace-loving nature.

Distances

- 75 km from Kongola
- 130 km from Katima Mulilo
- 250 km from Kasane
- 320 km from Victoria Falls
- 480 km from Rundu

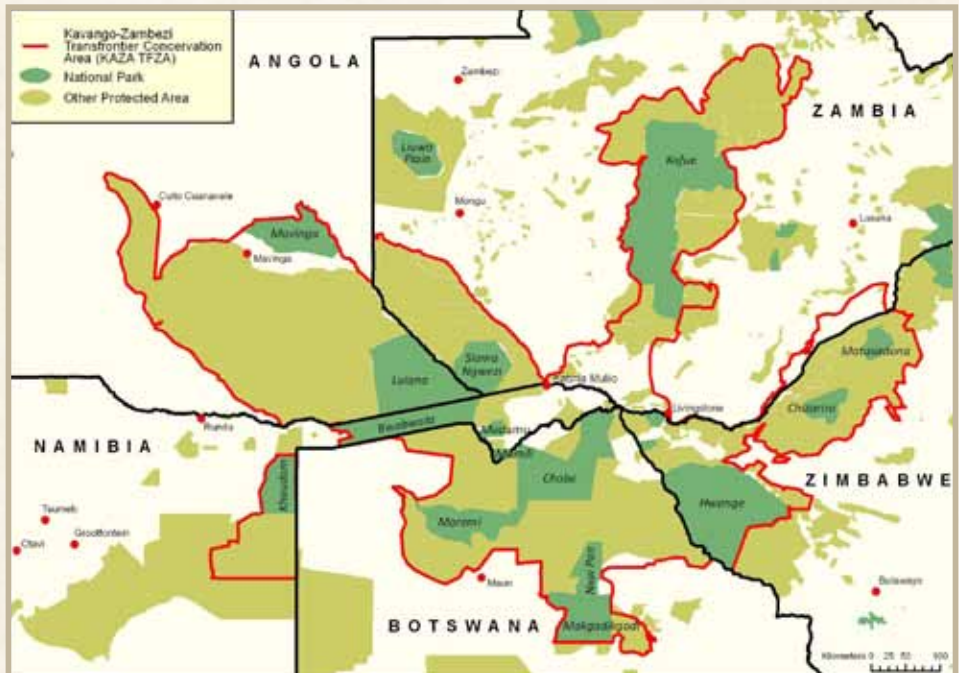


Nkasa Lupala National Park (previously was named Mamili NP) was officially proclaimed on 1 March 1990, just days before Namibia gained Independence. Nkasa and Lupala are the two dominant islands in the park.

This is the largest wetland area with conservation status in Namibia, and is a haven for wetland species. When the flood waters from the Kwando River are high, Nkasa Lupala NP becomes like a mini Okavango Delta. The Park size is 320 Km² and is an important corridor for elephants moving from Botswana to Angola and Zambia and is considered a core breeding area for wildlife that can disperse into neighboring conservancies.



The Lodge is located in the center of the newly established KAZA Conservation Area. Spanning five southern African countries (Angola, Botswana, Namibia, Zambia and Zimbabwe), the Kavango Zambezi Transfrontier Conservation Area (KAZA TFCA) is the world's largest conservation-oriented landscapes.



The Lodge

The Lodge construction started in April 2011 and the first guest arrived the 27 July of the same year.

All the material where transported by small trucks and 4x4 pick-up. Has 10 luxury Tents constructed out of steel, canvas and wood with proper doors and windows and en-suite bathroom facilities.

A central main area with bar, dining room, lounge facility, kitchen, storage, office and view point is linked to the rooms through a network of pathways.

The lodge is totally energy self-sufficient for electricity and water heating by using solar panels and will serve as an example of sustainable construction and planning not only in the region but in Namibia as a whole.



The lodge staff will endeavor to ensure that the lodge will offer a special wilderness adventure as the accommodation blends in with the



natural surroundings ensuring a unique experience while allowing for sensible and eco-friendly tourism management.

Wildlife viewing opportunities at the lodge include: lions, elephants, buffaloes, and rare wetland species such as lechwe, sitatunga and reed buck. This is a birders paradise, with more than 400 species recorded.

From November to April the Elephants leave the lodge area and move into Botswana (12 km from the lodge). The main reason is due to the rainy season and the absence of Mopane trees in the wetland area of Lupala Island.





Activities

Nkasa Lupala Game Drives

Duration approximately 2h 30m

Night Drive

Duration approx 1h (min 2 people)

Boat Cruise

On the Kwando-Linyanti river system.

Duration approximately 2h 30m
(min 2 max 8 people)

COMBO drive+Cruise

Game drive + Boat cruise on the Linyanti river. Duration approx. 5h
(min 2 max 9 people)

Guided walks with armed ranger

Seasonal activity - duration approx. 2h
(min 3 max 6 people)

Sheshe village Bicycle Tour

A cycling visit to the local community village. Also possible using a vehicle.

Total duration approx. 3h
(min 3 max 9 people)

Note: All activities are subject to safety and availability conditions.



Sustainable Tourism

Nkasa Lupala Tented Lodge is a Joint Venture (JV) with the Wuparo Conservancy and its over 2,500 community members supported from the MCA Namibia program, in the Zambezi Region (Caprivi), Namibia.

The JV Agreement we have in place commits Nkasa Lupala to the following community building / empowerment terms:

- 95%+ of the lodge employees are from the local community.
- Nkasa Lupala provides extensive training to build local capacity and service standards. Our JV Agreement formally commits the lodge to



continuously train and enhance the skill base of our local community staff members, including:

- In 2011 the Lodge sponsored our senior guide training to the “FGASA” (Field Guide Association of South Africa) level 1 in South Africa.
- In 2012 our Assistant Manager completed the University of Cape Town Tourism Management course, also



sponsored by the lodge.

- In 2013 one of our staff members supported by the African Safari Lodge Foundation attended the course at the SA College for Tourism.

- The lodge is committed to purchase the maximum amount of local goods and services from the local community.

Natural construction and maintenance materials that can be harvested locally are purchased, including reeds, thatch, mopane wood poles, etc.

- The JV is also a very detailed financial agreement that commits the lodge to pay a significant percentage of net revenue to the conservancy.

- The lodge must pay a minimum monthly flat fee and so long as occupancy is sufficiently high, the payment converts to a % of net turnover.

- Both the flat fee and percentage commitments increase annually for ten years, consistent with the business model to grow business revenue.

This model brought the lodge to be awarded of the 2011 Conservancy



Tourism Award and in 2012 was assigned with 4 out of 5 Flowers from the Eco Awards Namibia.

The Lodge also was awarded in the Lodge category, Silver in 2012 and Gold in 2013 from HAN (Hospitality Association of Namibia).



Environmental Strategy & Specific Actions for Sustainability

Nkasa Lupala Tented Lodge commitment to being a 'Eco friendly' Lodge with strong environmental ideologies and sustainable actions. Therefore we:

- Offer an eco friendly holiday experience reducing the Lodge overall impact on the environment, in particular focusing on the key areas of energy, water, waste, wildlife and all other items used in our operations.
- Promote and enhance our 'Eco friendly' practices and responsibilities to guests, visitors and staff, overall increasing awareness of the need to be environmentally responsible.
- Promote the need to reduce our carbon footprint to all our guests and visitors to Nkasa Lupala NP (Mamili).
- Monitor our waste consumption and implement waste minimization initiatives to reduce our annual waste.
- Monitor our energy usage and minimize consumption by both staff and guests.
- A full Environmental Impact

Assessment (EIA) was conducted, certified and approved by MET (Ministry of Environment and Tourism) on site of construction.

- Throughout our building process we have used local laborers, local materials providers and a local builder.
- The main building, the staff village and the luxury tents were constructed utilizing local natural materials, recycled iron and drums, PVC pipes, and canvas maintaining architectural integrity with surrounding area and local styles and utilizing sustainable construction methods and materials.
- Our decks are made utilizing sustainable wood harvested from community forests of the region and the stilts are made from commercially grown trees.
- We minimized the use of paint and varnish.
- The lodge is **totally** energy self-sufficient for electricity.
- Our washing soap, bathroom products and toilet paper are biodegradable and supplied by a certified ISO 9001:2008 company, as well as its South African Bureau of Standards (SABS).



WE USE 100% SOLAR ENERGY

All tents electricity and hot water is produced with Solar energy.

All main area, staff and managers accommodation are solar powered.

We store our fresh products and diaries in a Solar powered cold room.

The washing machine is Solar powered.

The water pump is Solar powered.

The internet system is Solar powered.

The kitchen appliances are Solar powered.

What is not solar powered at the lodge?

The cars and the boat engine.

The cooking stoves and some fridges are working on natural Gas.



Common trees in the lodge surroundings

Combretum Imberbe

LEADWOOD

*Can be found in abundance
in the camp.*



Albizia Versicolor

POISON-POD ALBIZIA

*Can be found close to
tent 2 and 3*

Sclerocarya birrea

MARULA

*Can be found
close to tent 5*



Garcinia Livingstonei

AFRICAN MANGOSTEEN

Can be found close to tent 5

Diospyros Mespiliformis

JACKAL-BERRY / AFRICAN EBONY

Can be found close to tent 7



Kigelia Africana

SAUSAGE TREE

Can be found close to tent 1

Acacia Nigrescens

KNOB-THORN

Can be found at the parking area



Common birds around Nkasa Lupala area



Lilac-breasted Roller
Coracias caudatus



Pied Kingfisher
Ceryle rudis



Hamerkop
Scopus umbretta



Greater Blue-eared Starling
Lamprotornis chalybaeus



Grey Go-away Bird
Corythaixoides concolor



Saddle-bill Stork
Ephippiorhynchus senegalensis



African Openbill Stork
Anastomus lamelligerus



Grey-headed Kingfisher
Halcyon leucocephala



African Fish Eagle
Haliaeetus vocifer



Blacksmith Lapwing
Vanellus armatus



Carmine Bee-eater
Merops nubicus



Little Egret
Egretta garzetta

PLEASE
don't take this informative
booklet from the room.

If you would like
we can send you a pdf file,
just leave you email with the
management.

Thank you

The Lodge is proudly a member of



Hospitality Association
of Namibia
www.han.org.na



Namibia Tourism Board



Eco Awards
Namibia
liberating indigenous tourism



Life enriching partners



Find us on:
facebook®

www.nkasalupalalodge.com